



AZIMUTH STERN DRIVE TUG 3212

“TUAPSE”

GENERAL

Yard number	512552
Delivery date	September 2019
Basic functions	Push-pull, escorting, towing and fire-fighting operations
Classification	RMRS
	KM ★ AUT1 Escort Tug FF3WS
Flag	Russia
Owner	Oteko-Terminal LLC

DIMENSIONS

Length overall (incl. fenders)	33.35 m
Beam overall (incl. fenders)	13.40 m
Depth at sides	5.35 m
Draught aft	5.90 m
Displacement (98% consumables)	784 t

TANK CAPACITIES

Fuel oil	154.1 m ³
Fresh water	15.6 m ³
Sewage	10.4 m ³
Clean lubrication oil	8.1 m ³
Dirty lubrication oil	6.7 m ³
Bilge water	6.7 m ³
Foam	10.4 m ³

PERFORMANCES

Bollard pull ahead	85.1 t
Bollard pull astern	80.1 t
Speed ahead	14.0 kn
Speed astern	14.0 kn

PROPULSION SYSTEM

Main engines	2x Caterpillar 3516C HD+ TA/D
Total power	5050 bkW (6772 bhp) at 1800 rpm
Thrusters	2x Rolls Royce US 255 P30/P35 FP
Propeller	3000 mm fixed pitch
Forced ventilation	20.000/40.000 m ³ /h

AUXILIARY EQUIPMENT

Main generator set	2x Caterpillar C7.1 TA, 230/400 V, 125 kVA, 50 Hz
Harbour generator set	Caterpillar C4.4 TA, 400 V, 64.5 kVA, 50 Hz
General service pumps	2x Sterling AKHA 6101 34 m ³ /h each
Bilge pump	Megator L125V-DBP
Fuel pumps	Sterling AKHA 5101 and AOH 3101
Fuel oil purifier	Westfalia OTC 3-02-137, 1740 ltr
Cooling system	Box cooling + anti-growth system
Fresh water pressure set	Sterling HBK 111 / AOH 3101
Sewage treatment plant	Tecnicomar ECOMar 20
Hydraulic system	Main engine driven pumps
Fifi set	Diesel engine driven pump 1300 m ³ /h
Fifi monitor	2x 500 m ³ /h, water/foam

DECK LAY-OUT

Anchor	2x 495 kg Pool (High Holding Power)
Anchor winches	2x Electrically driven anchor winches, 10 m/min
Towing winch	Hydraulically driven double drum, speed pull 27 ton up to 49 m/min, brake 200 ton
Capstan	Electrically driven, 5 ton at 15 m/min
Crane	Heila HLM 10-3S 0.8 ton at 10.36 m
Towing hook aft	Mampaey SWL 100 ton
Fendering	D-fender at sides, cylindrical fender at transom corners, cylindrical bow fenders with water spray and tyre fenders at fore and aft ship

ACCOMMODATION

For 10 persons, insulated and finished with durable modern linings, acoustical ceiling in the wheelhouse, floating floors and air-conditioned. With 6 cabins, galley, mess/dayroom, switchboard room, dry store and sanitary facilities.

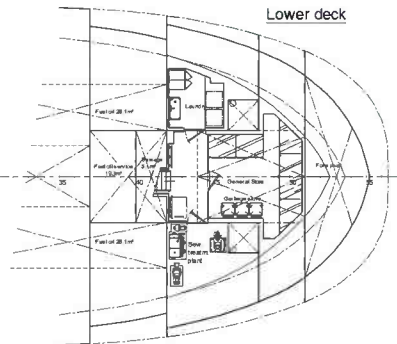
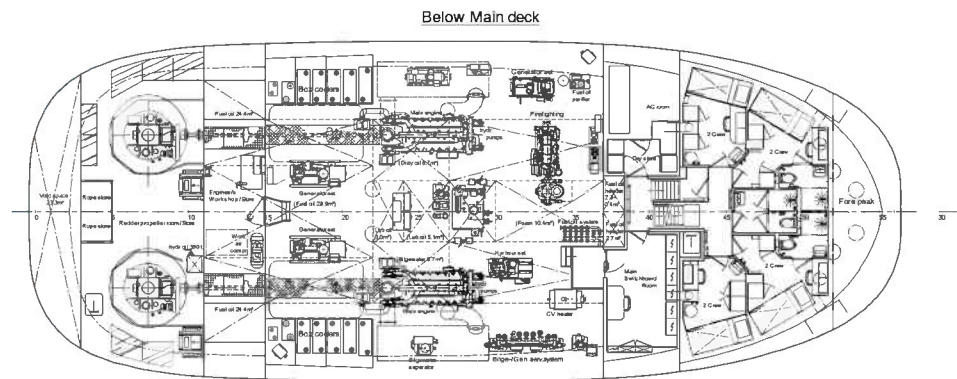
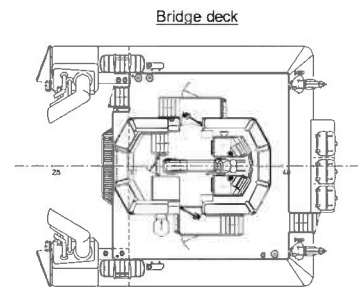
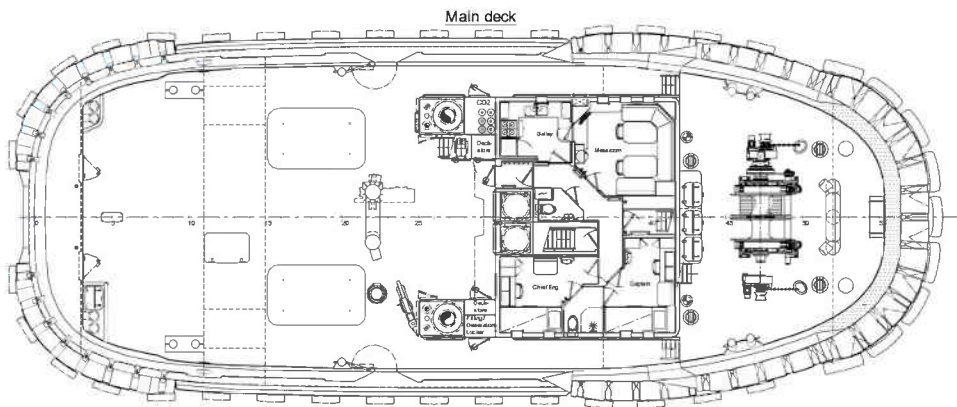
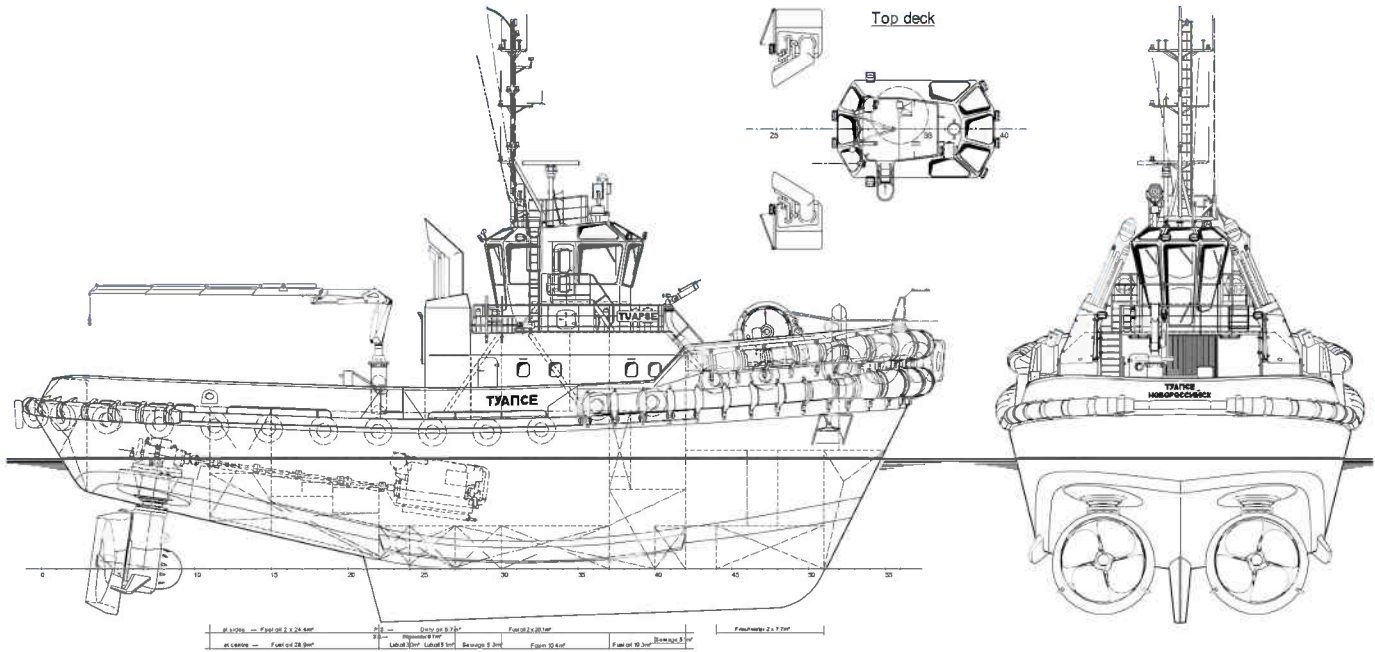
NAUTICAL AND COMMUNICATION EQUIPMENT

Searchlights	2x Norselight 2000 W Halogen
Radar system	Furuno FAR-2117
ECDIS	FMD-3200
Compass	Cassens & Plath, type Kotter
Satellite compass/GPS	Simrad GN70/HS80A
Autopilot	Robertson AP-70
Echosounder	Furuno FE-800
Speed log	Furuno DS-80
VHF	2x Sailor 6222
VHF hand-held	2x Jotron TRON TR-20
Navtex	Furuno NX-700A
AIS	Samyung SI-30
SSB	Furuno FS-1575
LRIT	Furuno Felcom 19
EPIRB	Jotron Tron-60S
Sart	Jotron Tron Sart20
Anemometer	Windsonic OMC 115

DAMEN

AZIMUTH STERN DRIVE TUG 3212

"TUAPSE"



DAMEN

DAMEN SHIPYARDS GROUP

Avelingen-West 20
4202 MS Gorinchem
The Netherlands

P.O. Box 1
4200 AA Gorinchem
The Netherlands

phone +31 (0)183 63 99 22
fax +31 (0)183 63 21 89

info@damen.com
www.damen.com

© No part of the leaflet may be reproduced in any form, by print, photo print, microfilm, or any other means, without written permission from Damen Shipyards Group